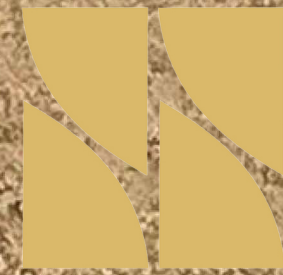




# Rammed Earth Board Series



SUNVIN  
CERAMICS

丹霞夯板 Danxia Rammed Earth Board

尺寸/Size: 580\*2400mm

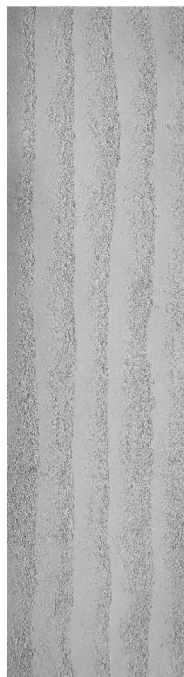
厚度/Thickness: 3-5mm



米白色/Beige  
052



浅灰色/Light Grey  
031



中灰色/Medium Grey  
038



深灰色/Dark Grey  
043



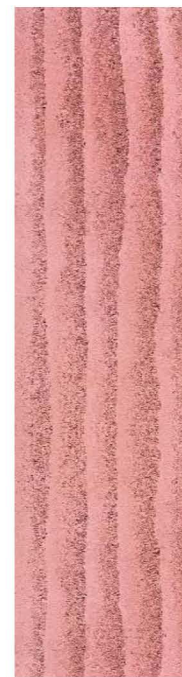
浅黄色/Light Yellow  
053B



土黄色/Khaki  
056B



土红色/Brown Red  
122



西瓜红/Watermelon Red  
121



渐变三色/Gradient Color  
101

戈壁夯土板 Gobi Rammed Earth Board  
尺寸/Size: 1200\*3000mm  
厚度/Thickness: 3-5mm



A款/ 102



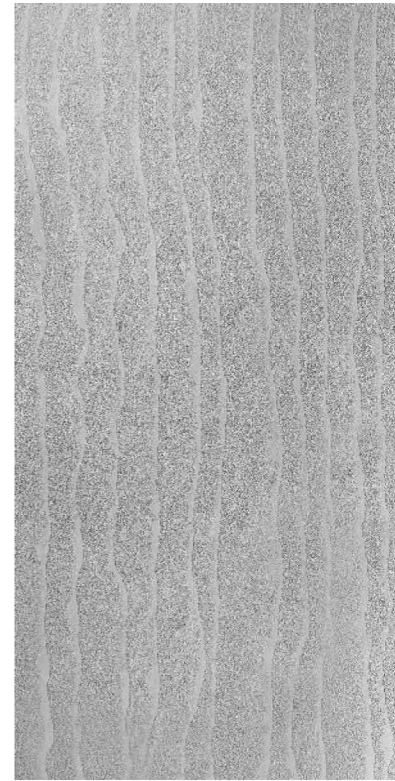
B款/ 103



C款/ 104



米白色/Beige 052

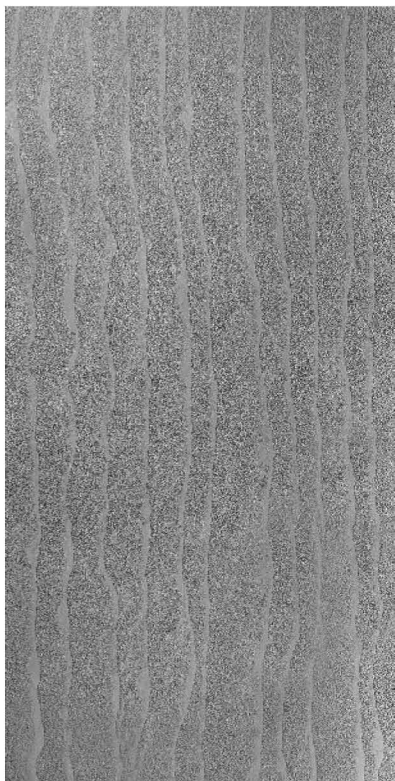


浅灰色/Light Grey 031

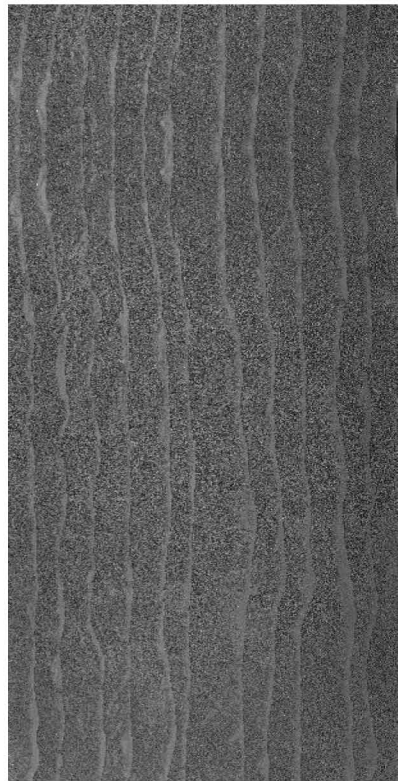
戈壁夯土板 Gobi Rammed Earth Board

尺寸/Size: 1200\*3000mm

厚度/Thickness: 3-5mm



中灰色/Medium grey 038



深灰色/Dark Grey 043



土红色/Brown Red 122



黄色/Yellow 054B

城墙夯土板 Rampart Rammed Earth Board

尺寸/Size: 600\*3000mm

厚度/Thickness: 3-5mm



米白色/Beige  
052



灰白色/Grey White  
030



浅灰色/Light Grey  
031



深灰色/Dark Grey  
043



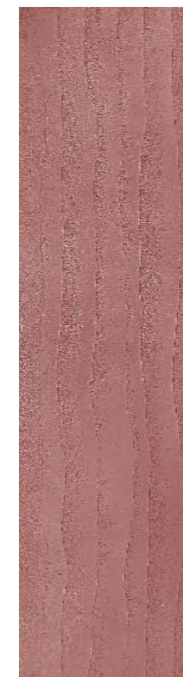
浅黄色/Light Yellow  
053B



土黄色/Khaki  
056B



土红色/Brown Red  
122



西瓜红/Watermelon Red  
121

遗迹夯板 Relic Rammed Earth Board

尺寸/Size: 1200\*3000mm

厚度/Thickness: 3-5mm



中灰色/Medium Grey 038



窑变灰色/Gradient Grey 105



窑变红色/Gradient Red 107

窑洞夯土板 Cave Rammed Earth Board

尺寸/Size: 600\*3000mm

厚度/Thickness: 3-5mm



浅灰色/Light Grey  
031



深灰色/Dark Grey  
043



浅黄色/Light Yellow  
053B



土黄色/Khaki  
056B



土红色/Brown Red  
122

# 产品辅材及工具

PRODUCT ACCESSORIES AND TOOLS

纳米罩面剂

nano sealant



结构胶和胶枪

structural glue and glue gun



小刮铲

small scraper



激光水平仪

laser level



修色剂

color modifier



填缝剂

caulk



切割机或角磨机

cutting machine or angle grinder



毛笔

brush





# 施工流程图示

## CONSTRUCTION PROCESS DIAGRAM



1.产品切割  
Product Cutting



2.产品背后打胶上墙  
Glue the back of the product onto the wall



3.用气钉固定  
Fit it with air nails



4.使用水平尺测量施工效果  
Measure the construction size with a ruler



5.铺贴后使用干布清洁  
Clean it with a dry cloth after paving



6.取出产品附件填缝剂填缝  
Take out the product accessories and caulk



7.阴角填缝  
Fill the internal corners with caulk



8.阳角填缝  
Fill the external corners with caulk



9.用刮刀修平整填缝剂  
Use a scraper to smooth the caulk



10.打磨  
Grind the edges and corners



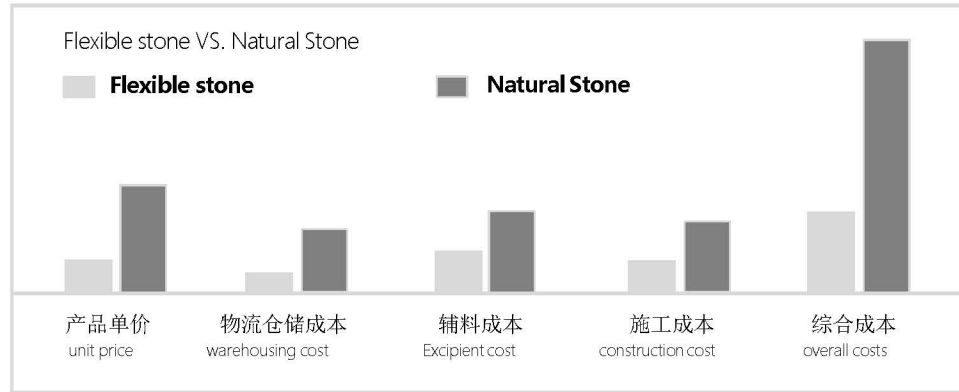
11.用修色剂进行修色  
Use a color modifier to repair the surface color



12.待完全干后拔出气钉  
After it is completely dry, pull out the air nails

## 柔性再生石和天然石材各项成本比较

Cost comparison between MS Regenerated Stone and Natural Stone



## 产品特性及优势

PRODUCT FEATURES AND ADVANTAGES



★ 无需敲掉旧基层，可直接粘贴，无固体垃圾排放，不扰民

★ 产量高，成本低，工期快，施工易，效果好

★ 可量身订制符合当地风俗或风格的产品

★ No need to knock off the old base layer, it can be pasted directly, no solid waste discharge, no disturbing people

★ High output, low cost, fast construction period, easy construction and good effect

★ Tailor-made products in line with local customs or styles

## 柔性再生石与传统材料对比

PRODUCT FEATURES AND ADVANTAGES

	石材 stone	外墙砖 Exterior wall tiles	涂料 Coating	铝塑板 Aluminum composite panel	柔性再生石 Flexible stone
环保性 Environmentally friendly	不环保 开山伐林 Not environmentally friendly	不环保 排放大量二氧化碳 Not environmentally friendly	不环保 有甲醛等 污染风险 Not environmentally friendly	不环保 生产有污染 排放 Not environmentally friendly	非常环保，天然原材料，零污染，可循环利用 Environmental friendly
运输性 Transport	比较重 运输成本大 Heavier High cost	比较重 运输成本大 Heavier High cost	特殊保护 运输成本大 High cost	运输成本大 High cost	运输成本低 产品轻质节能，节省成本 Low transportation costs, light weight, energy saving
安全性 Safety	不安全 施工难度大 Unsafe	不安全 有脱落等安全隐患 Unsafe, Risk of falling off	安全 Safety	不安全 Unsafe	安全 轻薄，粘贴牢固无高层脱落风险 Safety, lightweight, thin, no risk of falling off for high-rise building
耐久性 Durability	耐久 Durable	耐久 Durable	很差 容易褪色 easy to fade	一般 Generally	耐久 抗冻融，耐老化 历久弥新 Durable, Freeze-thaw resistance, aging resistance
防火性 Fire resistance	防火 Fireproof	防火 Fireproof	/	不防火 No fireproof	A级防火 Class A fire protection
方便性 Convenience	施工不方便 Construction is inconvenient	施工不方便 Construction is inconvenient	施工方便 Easy to construct	施工不方便 Construction is inconvenient	施工方便 Easy to construct
表现力 Expressiveness	表现力有限 limited expressiveness	表现力有限 limited expressiveness	缺乏表现力 lack of expressiveness	缺乏表现力 lack of expressiveness	表现力丰富 可仿石仿木仿皮仿金属 Rich performance, imitation of stone, wood, leather, metal
光污染 light pollution	较小 Smaller	有 Yes	无 None	较大 High	纹理自然，无光污染 Natural texture, no light pollution

## 客户需要了解的事项说明 Supplementary explanation

### 1.产品质量表现 Product Quality

#### ① 关于产品纹理差异问题

About difference texture of products

自然的，便是最好的。魔法石软瓷砖尽量做到还原产品本身的自然状态，因此每一片产品我们力争做到纹理绝无重复，片片不同，非常接近自然，这是软瓷与瓷砖、涂料不同的地方，也是独一无二的优点，给客户id提供无与伦比的真实体验。

Natural is the best. The magic stone soft stone try to restore the natural state of the product itself, so we strive to make every piece of product have non-duplicate texture, different pieces, and very close to nature. This is the unique advantages difference between soft stone and ceramic tiles, coatings. Meanwhile it's providing customers with unparalleled real experience.



#### ② 关于产品厚薄差异问题

About thickness difference of products

魔法石软瓷砖本身追求与大自然的贴近，还原产品本身的自然存在状态。有肌理感的产品由于本身有凹凸纹路的存在，会导致边缘厚薄不一致，但正是这个特点，贴近了大自然的感官感受，让产品更加真实。平面类产品，表面平整，但在生产过程中可能会出现误差，但这些误差都在国家标准之内。

The MS soft stone which itself seeks to be close to the nature and restore the natural existence itself. Due to the existence of concave and convex texture, the products with texture will lead to inconsistent thickness of the edges, but this is a feature that is close to the sense of nature, making it more authentic. Flat products have evenly surfaces, but errors may occur in the production process, but these errors are within the national standards.



#### ③ 关于产品存在毛边问题

About the problem of rough selvedge

产品若含有少量毛边属正常现象，会出现在劈开砖系列产品，石材类均为切割式，极少存在毛边。

If there is a little rough selvedge in the products, it is a normal phenomenon, which will appear in the split brick series products. The stone materials are all cutting type, with few rough selvedge.

## 客户需要了解的事项说明 Supplementary explanation

### 1.产品质量表现 Product Quality

#### ④ 关于产品存在色差问题

About the shade difference of products

魔法石软瓷砖主要生产原料是改性无机土和天然石粉，在生产过程中，由于温度的变化，而造成丰富而不杂乱的自然色调。特别要提醒的是，由于每批原料的产地和成因可能有差异，补货时颜色可能会与原订单有一些差别，因此每批订货时，最好做好订货计划，一次性订购完所需产品，尽量避免补货的情况出现。在客户色板确定的情况下，工厂生产时都会严格把关，这种不同批次间的色差问题，在瓷砖等各类装饰材料中也一样无可避免。

另外，在不同的光线，不同的背景及不同的屏幕分辨率，同一片产品颜色显示也会有所差异，订货前最好先确定小样颜色。

The main raw materials for the production of magic stone soft stone are modified inorganic clay and natural stone powder. During the production process, due to the change of temperature, rich but not messy natural colors are created. It is particularly important to remind that the origin and cause of formation of each batch of raw materials might be different, and the color of replenishment may be little different from that of the original order. Therefore, it is better to make an order plan for each batch of order, order the required products at one time, and avoid replenishment. When the customer's color plate is confirmed, our factory will strictly control the production processing. The color difference between different batches is also unavoidable in various decorative materials such as tiles.

In addition, the color display of the same product will be different during different scene of light, different backgrounds and different electronic screen. It is better to confirm the color of the sample before ordering.



同一片产品分别在同一背景下不同灯光的实拍照片

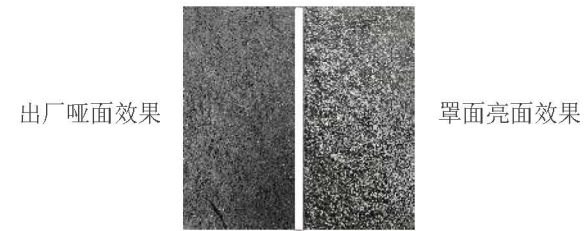
Real photos of the same product with different lights under the same background

#### ⑤ 关于产品是否需要上罩面剂的问题

About whether the product needs sealant

魔法石软瓷砖表面均为哑光效果，如客户根据效果需要产品表面为亮面可选择上一层罩面剂。涂装系列产品出厂前会有轻微的罩面效果，如需光泽度更强烈，出厂前可根据要求上罩面剂或自行处理。

The surface of MS soft stone is matte effect. If the product surface is bright according to the effect needs, customers can choose a layer of sealant finish. The coating series products will have a slight coating effect before leaving the factory. If the glossiness is required to be stronger, the sealant can be applied or self treated according to the requirements before leaving the factory.



The original products from factory is mat finish, and sealant covered can be shinny finish.

### 2.产品如何改色 Changing Color

改色可提供色卡或实样给工厂调色或自行购买优质国标外墙水性漆，喷涂。先小面积试用，干透后在看实际效果是否达到要求，后再大面积喷涂。改色后建议加上罩面防护处理，如户外环境恶劣的可加氟碳漆。

Color cards or real samples can be provided to the factory for color mixing or high-quality national standard exterior wall water-based paint can be purchased for spraying. Try it on a small area first, and then spray it on a large area after the actual effect meets the requirements. After color change, it is recommended to add a protective coating, such as fluorocarbon paint in harsh outdoor environment.

## 客户需要了解的事项说明 Supplementary explanation

### 3. 辅料使用说明 Instructions of the accessories

#### ① 纳米修色剂和原浆修补料

Nano color modifier and raw repair material

(1) 填缝后保留美缝纸，先清理接缝处的灰尘和粘接剂

Keep the seam paper after caulking, and clean the dust and adhesive at the joint first

(2) 用接近色的修补料将接缝处的缝隙和边角填满，再将表面抹平

Fill the gaps and corners at the joints with patching materials of similar color, and then smooth the surface

(3) 待修补料干燥后，用修色剂在修补料上刷一遍，再将美缝纸撕除

After the repair material is dry, brush the repair material on the color modifier once, and then tear off the seam paper

注意：修色剂使用前先小面积试用确定是否达到补色效果，没问题后再大面积使用该产品

Note: Before using the color modifier, try it on a small area and make sure whether it have the effect of color supplement, and then use the toner on a large area if there is no problem

纳米修色剂

Color modifier



原浆修补料

raw repair material



#### ② 水性罩面剂

Aqueous sealant

(1) 清理干净底材面上的灰尘和污染物

Cleaning the dust and pollutants on the surface of the substrate

(2) 使用前可加10%的水稀释并混合均匀

Dilute with 10% water and mix well before use

(3) 采用滚涂或者喷涂，将罩面剂均匀地涂刷在底材上

Roll coating or spraying shall be adopted to evenly brush the finishing agent on the substrate

注意：不建议在气温5度以下或潮湿环境下施工，会影响成膜效果；尚未干透时，不要触摸或遇水，避免留痕或涂层变白。

Note: It is avoid constructing below 5 °C or humid environment, which will affect the film forming effect; Do not touch or touch with water when it is not completely dry, to avoid leaving marks or whitening the coating.



水性罩面剂 Aqueous sealant